



Cycling in Vallespir



CYCLING ROUTES
DEDICATED SERVICES
LABELED PROVIDERS



À CHACUN SON EXPÉRIENCE en Vallespir





CONTENTS

ITINERARIES

Greenway cycle route	p.5
Cycloport area	p.14
The Mediterranean by bike	p.17
Pirinexus itinerary	p.18

SERVICES

Rental and repair	p.19
Accompanied electric bike outings	p.20
The "Acceuil Vélo" accommodations	p.21
Service areas	p.27
Transports	p.30



- THE CYCLING ROUTES -

VELOROUTE VOIE-VERTE

The Véloroute Voie-Verte which crosses the Vallespir is a cycling route of almost 90 kilometres. This route is ideal for day trips with the family, sporty outings with friends, or over several days, for keen cyclists.

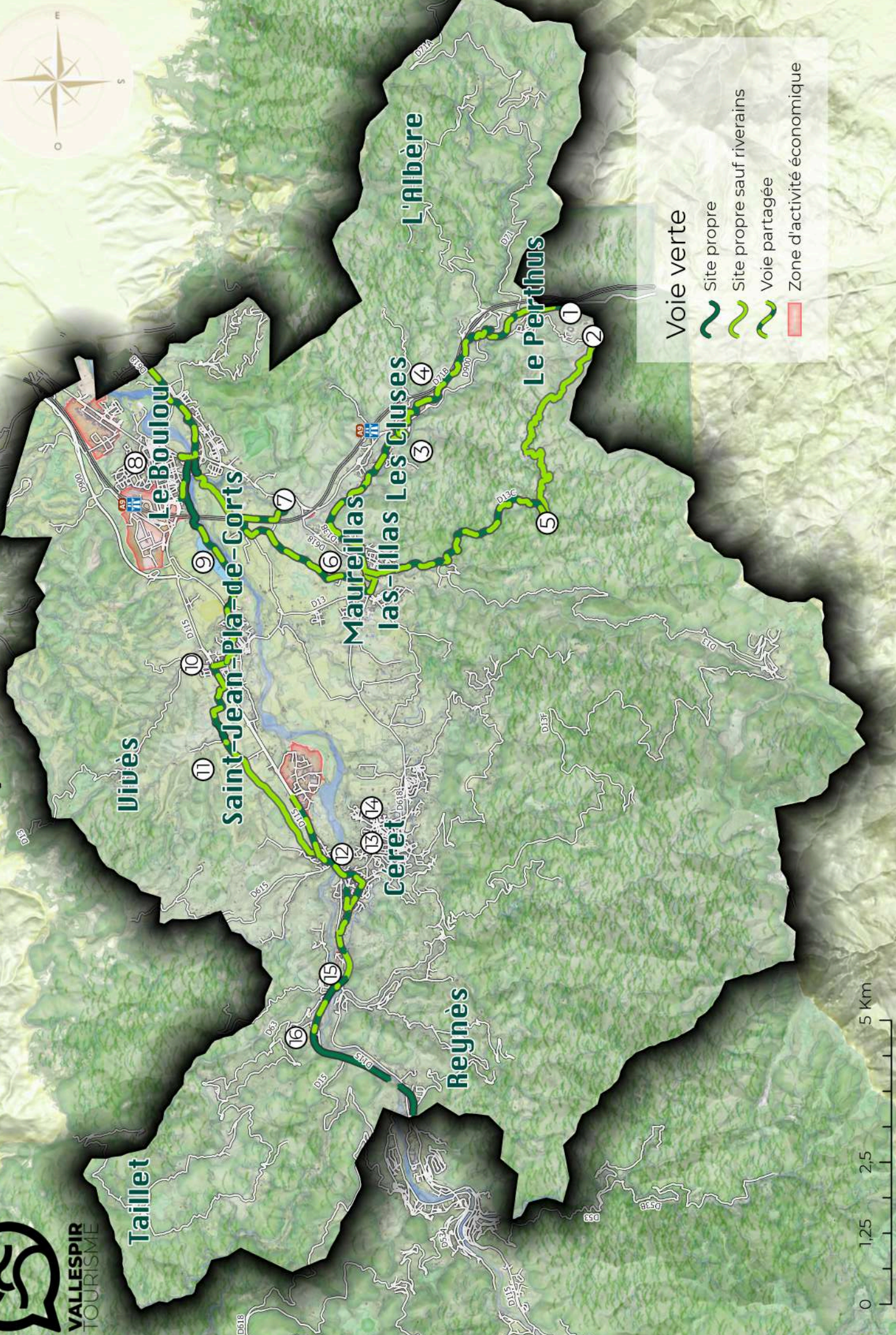
On the route, you will pass by the Pirinexus itinerary as well as the great Mediterranean Route, the EuroVélo 8.



Les voies vertes en Vallespir



VALLESPİR
TOURISME

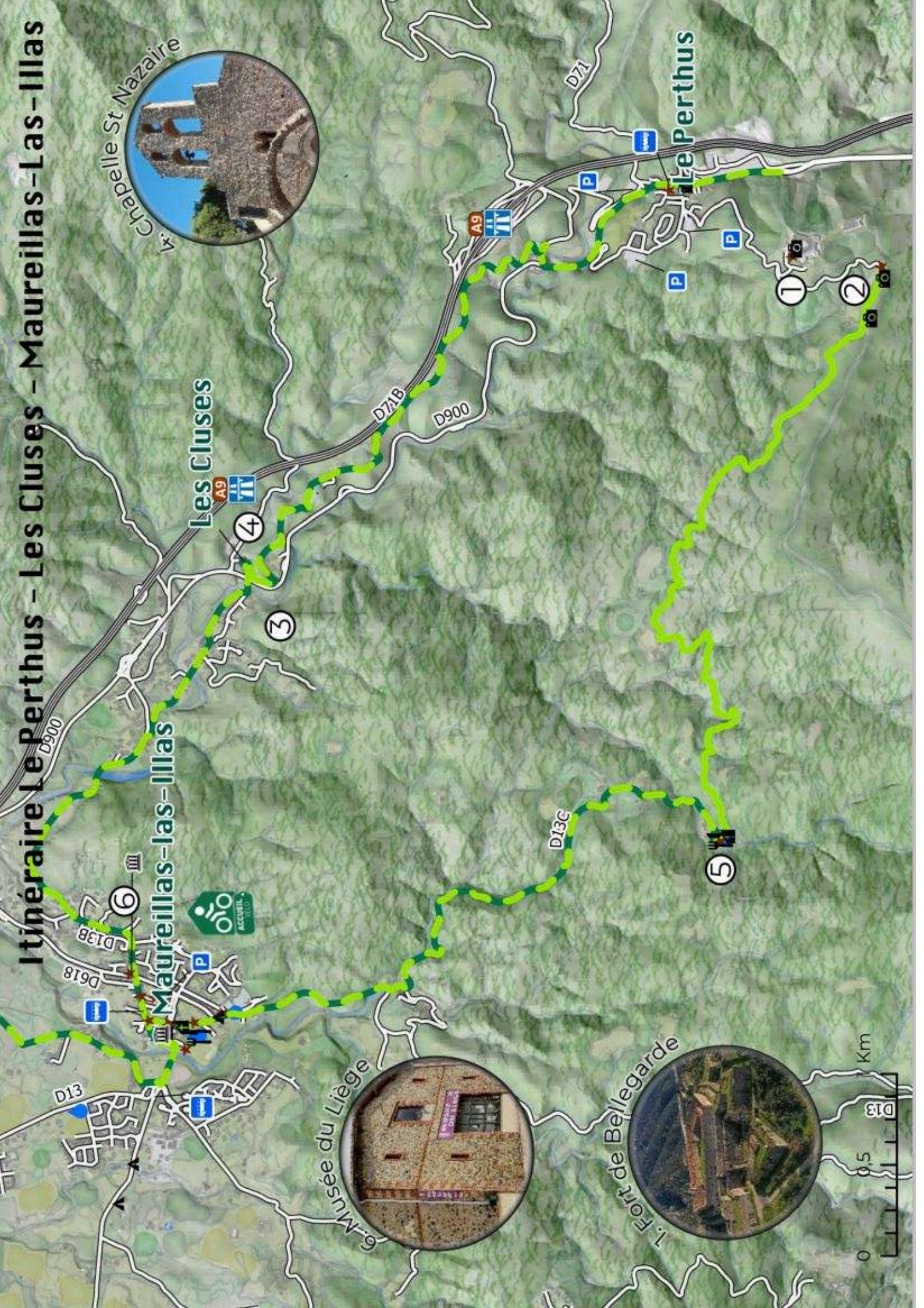


Voie verte

- Site propre
- Site propre sauf riverains
- Voie partagée
- Zone d'activité économique



Itinéraire Le Perthus - Les Cluses - Maureillas-las-Illas



Section 1 : Le Perthus - Les Cluses - Maureillas-Las-Illas

Le Perthus - Les Cluses - Maureillas
Distance : 9Km, Altitude+ 103m / -235m,
Estimated time+/- 30 min

Le Perthus - Maureillas
Distance : 9Km, Altitude+ 65m / -264 m,
Estimated time +/- 30 min

From Le Perthus, there are 2 possible itineraries to get to Maureillas-Las-Illas: via the Les Cluses village, or via Ruinoguès.

Le Perthus :

Before taking off on your bike, take the time to admire the Fort de Bellegarde (1), built by Vauban in the 17th century, which plays an important role in the history of the French-Spanish border and is a spectacular piece of military architecture. Le Col De Panissars (2) is not far off, home to the Trophée de Pompée that commemorates the victory of the Roman army from Pompey over the Spanish. It also designates the border between the Gaul and Hispania in Antiquity, and the junction between the Via Domitia and the Via Augusta; which links Italy to the Iberic peninsula.



Les Cluses :

In the Cluses village, the Via Domitia is dominated on one side by a Roman Fort (3) from the 2nd century, and on the other side by the Castell dels moros and the Chapel Saint-Nazaire (4). The communal space of the village olds a permanent exhibition called « Le château des Maures, a unique heritage in the heart of the Via Domitia », which retraces the history of the place.



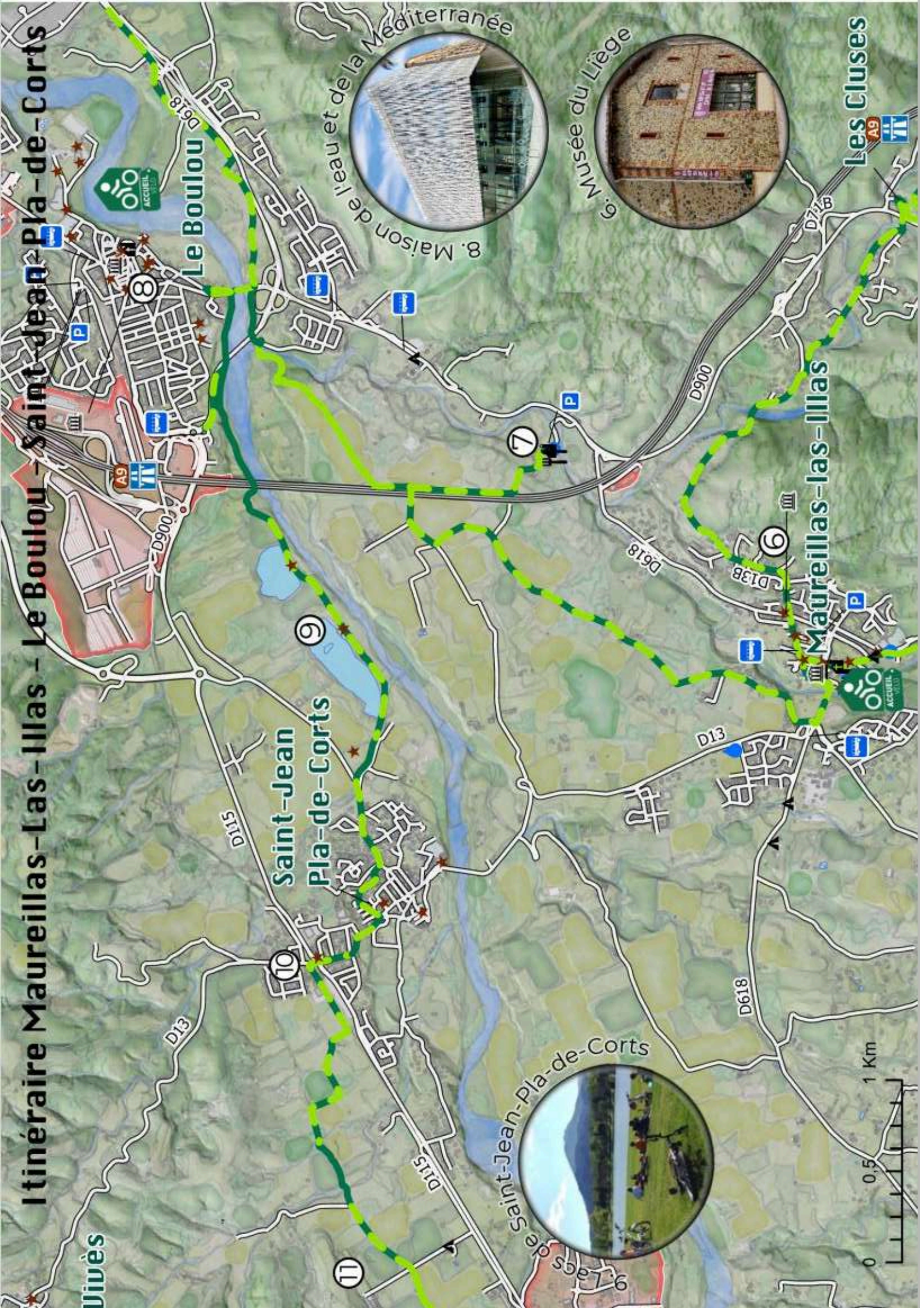
La Maison Pour Tous: 8 Pl. de la République, 66480 Maureillas-Las-Illas

Maureillas - Las Illas :

Upon taking the route via Ruinoguès, you will discover the Chapel of Saint Miquel de Ruinoguès (5) while crossing through the oak tree forests that are up to centuries old, and whose exploitation once allowed the flourishing of the villages in the Vallespir. If you want to know more about the heritages of the oak tree and the cork industry, stop by at the Oak Museum in Maureillas-Las-Illas.

2. Le Col de Panissar

Itinéraire Maureillas-Las-Illas - Le Boulou - Saint-Jean-Pla-de-Corts



Vivès

D13

D15

D900

D618

Le Boulou

Saint-Jean
Pla-de-Corts

9

11

9. Lacs de Saint-Jean-Pla-de-Corts

7

D13

D618

D618

D138

6

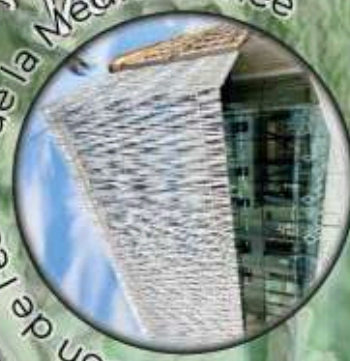
Maureillas-las-Illas

D71B

A9

Les Cluses

0 0.5 1 Km



8. Maison de l'eau et de la Méditerranée



6. Musée du Liège



9. Lacs de Saint-Jean-Pla-de-Corts

Section 2 : Maureillas-Las-Illas - Le Boulou - Saint-Jean-Pla-de-Corts

Maureillas-Las Illas - Le Boulou
Distance: 5,5Km, Altitude- 55 m,
Estimated duration +/- 15 min

During your exit of Maureillas-Las-Illas, heading toward Le Boulou, you can make a pit-stop at the **Chapel of Saint Martin de Fenollar (7)**, situated close to the old Via Domitia. This humble pre-Romanian architectural structure is home to an exceptional mural from the 12th century!

Le Boulou (8) :  Office de Tourisme du Boulou: 4 Rue Arago, 66160 Le Boulou

Le Boulou is a reputable thermal station which attracts many curists looking for relaxation and wellness. The water theme spills over into the « **Maison de l'eau et de la Méditerranée** » (House of water and the Mediterranean) – it is a great cultural location that presents scientific information accessible to all audiences. The Boulou tourism office is also located within its walls and is there to inform you of the other cultural locations in the area, such as the **Maison de l'Histoire** (House of History), or the **Espaces des Arts** (Art Space).



10. Eglise San Sebastian

Saint Jean-Pla-de-Corts :

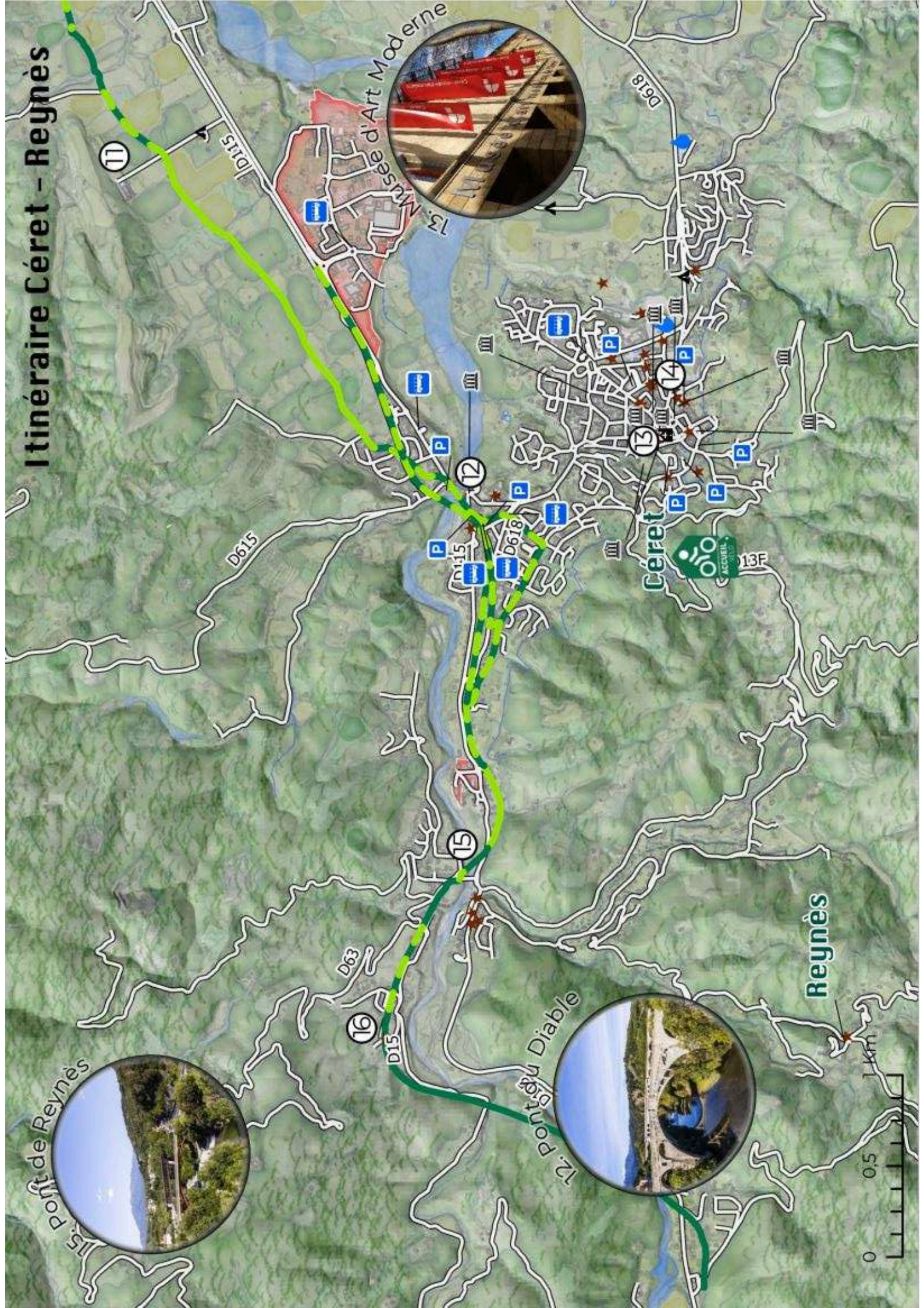


11. Château d'Aubiry

The Saint Jean-Pla-de-Corts village is known for its **two lakes (9)** that are located directly on the Véloroute cycle path. With the Canigou as the backdrop, the lakes are idyllic locations that inspire rest and relaxation. From spring time onwards, leisure activities, as well as sport and adventure are put into place for all ages. Continuing on your path and after crossing the village, you will come face to face with the **San Sébastian (10)** church; just after the old railway crossing.

After this, it's a long straight path heading to Céret, through vineyards and cherry trees, and parallel to the **Château d'Aubiry (11)**, which is a real architectural pearl built in 1892, and is part of the Historic Monuments list since 2006.

Itinéraire Céret - Reynès



Section 3 : Céret - Reynès

St Jean-Pla-de-Corts- Céret (Pont du Diable)
Distance : 5,3Km, Elevation +40m / - 13 m,
Estimated duration +/- 15 min

Céret (pont du Diable) - Reynès
Distance : 6Km, Elevation + 85m / - 35m,
Estimated duration +/- 15 min

 Office de Tourisme Intercommunal du Vallespir:
5 Rue Saint-Ferréol, 66400 Céret

Upon entering the town, you are welcomed by the **Devil's Bridge (11)**, built in 1321 under the reign of the Majorque kings. This majestic monument consists of a single arch at 150 feet which straddles Le Tech River and whose keystone is 72 feet high.

You won't regret diverging from the cycle path for a pitstop in the center of old town of Céret. Thanks to the tourist maps of the town and the "little detectives" map available in the tourism office in the center of town, you can explore in detail the heritage sites and the exceptional artistic nature of the town. The **Modern Art Museum (13)** is home to international artists such as Picasso, Braque, Soutine, and more - so it's worth having a look around! You can complement the artistic discovery by visiting the **Music Museum (14)** and its collection of traditional international instruments.



14. Musée de la Musique

Reynès :

When you exit Céret the cyclepath takes you past the old railway and past old rail structures like tunnels and metal bridges, such as the **Bridge of Reynès (15)**, which is particularly beautiful! While crossing the village of Vilar, you can make a pitstop at the Church **Sainte-Marie du Via (16)** before continuing on your path towards the Forge of Reynès, after which you cross another metal bridge over Le Tech.



16. Eglise Sainte Marie du Vila



Discover the Vallespir heritage along the cycle route by following the mascot Galipan in the footsteps of his ancestors! Clues, missions, mini-games, with the Baludik application opt for a fun and original visit of the territory by bike.

The Baludik application can be downloaded free of charge and magnetic holders to attach your mobile phones to your bike are available at the reception of the Vallespir Intercommunal Tourist Office.



Download the app
here



- THE CYCLING ROUTES -

ROAD CYCLING

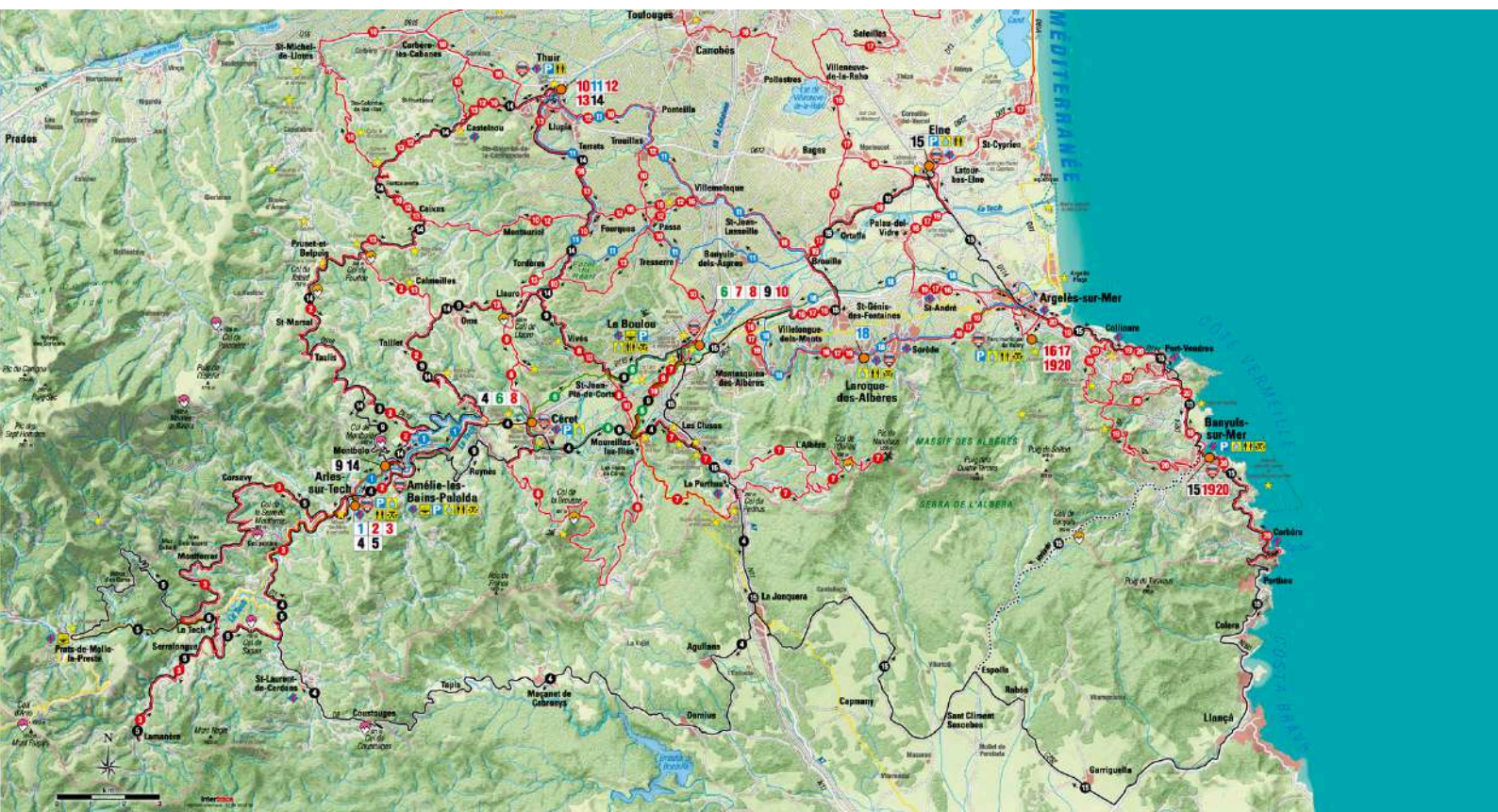
An "Espace CycloSPORT" is a territory labelled by the French Cycling Federation (FFC), favourable to the practice of road cycling.



The "Espace cycloSPORT", which has been designed on our territory, has 20 routes for all levels, from beginners to expert cyclists!



More information on : www.cycloSPORT.ffc.fr





VALLESPİR
TOURISME

Discover and download the 5 itineraries of the Vallespir gpx.

THE PLAINS OF THE VALLESPİR

22km and 712 feet of elevation

Startpoint: Céret / Le Boulou – Difficulty: *

Couple the fun and the practical by cycling to discover the charming borough of Céret named the “Mecque du Cubisme”. Besides the Museum of Modern Art, its famous cherries, the big Saturday market, it also has 2000 feet of pavement comparable to Paris Roubaix!



THE NEOULOUS PEAK

65 km et 5249 feet of elevation

Startpoint: Le Boulou - Difficulty : ****

It's the Catalan Mont Ventoux! There is a lighthouse at the end of the chain of the Pyrenees, that towers over the sea and the beaches of the Roussillon at the Rosas bay. The Ventoux also has a great panorama at its peak, with a steep 15km to fly down and then a 10% upward trudge.



BETWEEN THE ASPRES AND THE VALLESPIR,

68 km et 5000 feet of elevation

Startpoint : Céret / Le Boulou - Difficulty : ****

This is what we call the "Oak Road"; as it is decorated by beautiful oak trees. Beyond the coast of Vivès, there is the Col de LLauro, l'Ermitage St Ferréol, and the oak museum in Maureillas. The only vegetation are the chestnut trees that are along the way.



AT THE DOOR OF THE HAUT VALLESPIR,

80 km et 5500 feet of elevation

Startpoint: Céret / Le Boulou Difficulty : *****

After a warmup in Reynès, you will start upon two of the difficult cycle routes known by locals. First; the steep uphill in Montbolo, and then the slightly easier one in, Taillet and all of this among a very southern French atmosphere of chestnut, oak, and pine trees.



CONTREFORT DES ASPRES,

85 km et 4900 of elevation

Startpoint: Le Boulou / Thuir - Difficulty : ****

From the Aspres capital, Thuir or even the thermal bath station in Le Boulou, this itinerary merges the two main valleys of the area, the Tech to the Têt and the orchards of the Bas-Confluent. To note in the third part of this ride is the lovely downhill descent into Saint-Michel-De-LLotes.





- THE CYCLING ROUTES -

EUROVELO 8 MEDITERRANEAN ROUTE

The Mediterranean route in France is the French part of the EuroVelo8, the cycling route crossing 11 European countries from Cyprus to the south of Spain!

The 36km of the first French stage of this itinerary starts at the Col de Panissar in Le Perthus and goes to Argelès-sur-Mer, passing through Maureillas and then Le Boulou along the Albères.

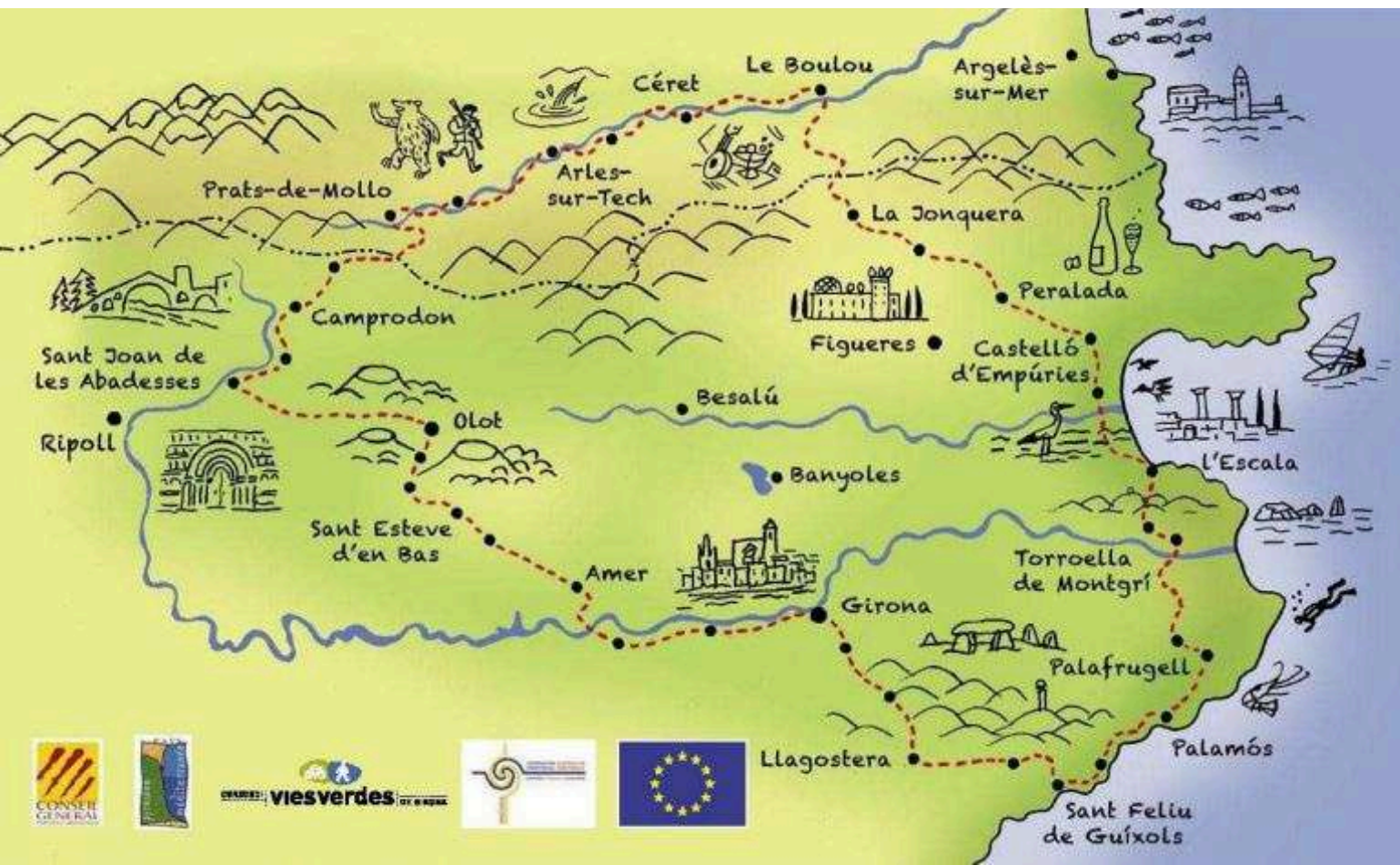




THE CYCLING ROUTES

PIRINEXUS ITINERARY

The Pirinexus itinerary is a cross-border road cycling loop that links the territories on either side of the Pyrenees on the eastern edge between France and Spain. The main circuit of the route covers 360 km, to which must be added 175 km of complementary routes, which allow you to reach places of interest close to the route.



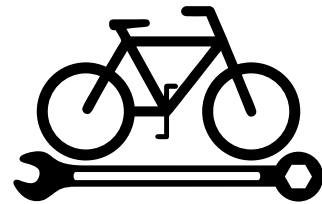


- SERVICES -

RENT AND REPAIR

RENT A BIKE

REPAIR YOUR BIKE



- Aloha Camping Club
Domaine Al Camp Roig
La Forge de Reynes
66400 Reynes
+33 (0)4 68 39 43 12
info@aloha-camping-amelie.com

CYCLES VALLESPİR
10 rue Arago
66160 Le Boulou
+ 33 (0)6 71 06 51 98



- Camping des Cerisiers
Mas de la Toure
66400 Céret
+33(0)4 68 87 00 08
camping.lescerisiers@club-internet.fr

FUN BIKE CENTER
1 bis rue de Batère
66400 Céret
+33 (0) 4 68 22 29 34



GUIDED OUTINGS

ELECTRIC MOUNTAIN BIKES



ALOHA AVENTURE

Discover Vallespir on an electrically-assisted bike with a professional instructor !

Thierry, a passionate guide, will show you around Vallespir on an electric mountain bike through his themed outings. An original experience with a local guide, to discover the region and its heritage with fun!

Different levels and starting points in Vallespir
Minimum height 1m45 - From €30/person

+ 33 (0)4 68 39 43 12
www.aloha-aventure.com



- Services -

ACCOMMODATIONS

Accommodation with the "Accueil Vélo" label is located less than 5km from a cycle route, and offers facilities and services adapted to cyclists. They are committed to offering a personalized, attentive welcome to cycling tourists.



LABELED ACCOMODATION



LA FADRINA *** 3 épis

Mme Annette Aicardi
601 Cami de Cotlliure - Hameau de Villargeil
66490 Saint Jean-Pla-de-Corts
+33 (0)6 05 00 11 04 / +33 (0)6 26 70 53 83
ajp.aicardi@gmail.com



Maisonnette duplex on the ground floor, facing the thermal baths of Le Boulou, quiet and pleasant. Bike shed.



CHE VILLARGEIL ****

Mr. François Lloveras
Hameau de Villargeil
66490 Saint Jean-Pla-de-Corts
+33 (0)6 52 26 71 99
frlloveras@yahoo.es



Large catalan farmhouse, a real heaven of peace in the countryside.



LA LICORNE ***

Mme. Alice Thur
Mas d'en Baptiste Les Thermes du Boulou
66480 Maureillas-las-Illas
+ 33 (0)6 20 49 19 93
residencelarome@gmail.com



Maisonnette duplex on the ground floor, facing the thermal baths of Le Boulou, quiet and pleasant. Bike shed.

LABELED ACCOMODATION



MME GABRIELA RODRIGUEZ FERNANDEZ

13 rue Sainte Madeleine
66480 Maureillas-las-illas
+33 (0)6 89 60 93 43
maisoncheneliege@gmail.com

Les Aspres ** / Petit Vallespir **

3 gîtes located in a completely renovated 18th century village house. Common entrance. Common enclosed patio with flowers (barbecue, garden furniture). Communal car parks located between 50 and 300 m from the house. Village market every Thursday morning. The owners live on site.



LA TERRASSE DES OISEAUX



Carrer del porxo
66400 Taillet
+33 (0)6 12 14 17 12
y.meunier@my-holding.fr

Bed&Breakfast



At 34 km from Perpignan, 14 km from Céret, in the pretty village of medium mountain of Taillet, you will stay in this guest room for 2 people, completely renovated. Located on the ground floor of the owner's house, the bedroom opens onto a private terrace of 8 m², with a breathtaking view of the surroundings



LE REVEIL DES OISEAUX



Carrer del porxo
66400 Taillet
+33 (0)6 12 14 17 12
y.meunier@my-holding.fr



At 34 km from Perpignan, 14 km from Céret, in the pretty village of medium mountain of Taillet, starting from hikes, you will stay in this ground floor cottage, completely renovated. The cottage has its own entrance and is fitted out on the ground floor of the owner's house.

LEBELED CAMPSITES



ALOHA CAMPING CLUB ***

Domaine Al Camp Roig
La Forge de Reynès
66400 Reynès
+ 33 (0)4 68 39 43 12
info@aloha-camping-amelie.com
www.aloha-camping-amelie.com



On site : Leisure base with hiking, mountain bike, camping, climbing, treasure hunt.



CAMPING DES CERISIERS ***

Mas de la Toure
66400 Céret
+33(0)4 68 87 00 08
camping.lescerisiers@club-internet.fr
www.campingcerisiers.com



Located off the traffic, quiet, countryside,
breathtaking view of the Canigó, 10 minutes from the city centre.



CAMPING MAUREILLAS **

Rue des Evadés de France
66480 Maureillas-Las-Illas
+33 (0)4 48 07 06 36
info@camping-maureillas.com
www.camping-maureillas.com



A quiet, green camping site located at the foot of the Pyrenees, close to the village.



LEBELED HOTELS



HÔTEL LE MAS TRILLES ***

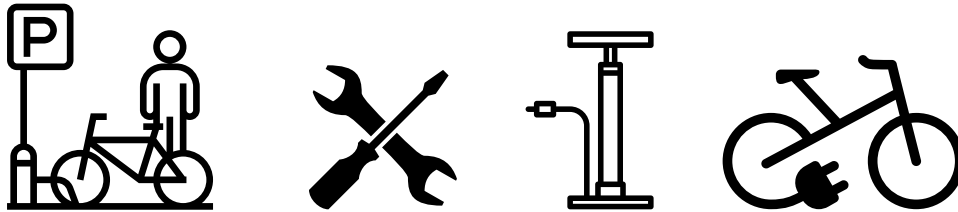
Le pont de Reynès
66400 Reynès
+ 33 (0)4 68 87 38 37

www.le-mas-trilles.com



Charming hotel in a 14th-century building where peace and quiet blend.

Double room from 95€.



In 1950, half of the local population worked on the manufacture of corks and their by-products.

Today, this craftsmanship has been industrialised. Created in 1982, the museum, unique in Europe, contains a collection of historic machines and tools.

With accompanying commentary and an interesting display of crafts across several rooms, you will discover the world of cork : its ecology, its harvest and its value as well as its many, often unknown, uses.

At the end of your visit, in a superb Catalan cellar, typical of the end of the 19th century, allow yourself to be surprised...

In casks, each of 25 000 liters, the ancient but still current relationship between cork and wine will no longer remain a secret for you.

OPENING HOURS

February 1 to April 15: 2 p.m. to 5 p.m. except Tuesday

April 16 to June 30: 10 a.m. to 12 p.m./2 p.m. to 5 p.m.

except Tuesday and Saturday morning

July 1 to October 15: 10 a.m. to 12 p.m./2:30 p.m. to 6:30 p.m. except Saturday morning

October 16 to November 30: 2 p.m. to 5 p.m. except Tuesday

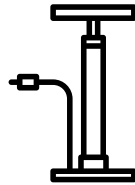
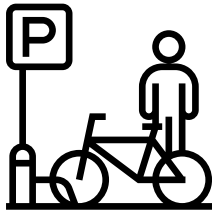
Closed Easter Sunday and Monday, 1/05/

Pentecost Sunday, 07/14-11/1-11/11

Annual closure in December and January

2, Avenue Maréchal Joffre
66480 MAUREILLAS-LAS-ILLAS
+33 (0)4 68 83 15 41





The Cap d'Ona Brewery – Distillery was founded in 1998 by Gregor Engler, a passionate Master Brewer and pioneer of French craft brewers. This year, for the fourth consecutive year, he has been ranked as the world's top brewer at the World Beer Challenge 2024.

Cap d'Ona beer evolves while always keeping in mind the core values of its creator: Excellence, Creativity, Authenticity, Eco-responsibility.

With a range of over 30 beers with unique aromas, universes, and flavors, the Cap d'Ona brewery – distillery offers you a journey through great beers of pure tradition as well as surprising beers, sodas, and spirits, highlighting the treasures of our rich French and Catalan terroir.

Enter the magical world of Cap d'Ona: www.cap-dona.com
OR visit us at La Fabrique / Bar-Boutique-Visit in Céret and at the Bar-Boutique in Argelès-sur-Mer.

16 Route de Saint-Jean
66400 Céret
Phone: +33 4 68 95 79 09



OPENING HOURS

TUESDAY, WEDNESDAY: 10:00 a.m. - 1:00 p.m. / 3:30 p.m. - 8:30 p.m.

THURSDAY and FRIDAY: 10:00 a.m. - 1:00 p.m. / 3:30 p.m. - 10:00 p.m.

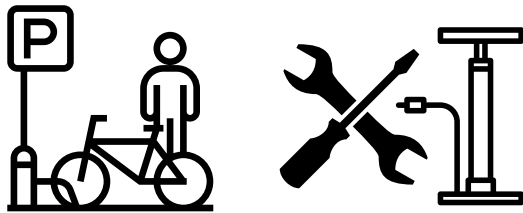
SATURDAY non-stop: 10:00 a.m. - 8:30 p.m. // CLOSED Sunday and Monday



- Services -

SERVICE AREAS

POINTS "ACCUEIL VELO"



2 "Accueil Vélo" points welcome you and provide services such as bike parking, a repair kit for minor damage, and an electrical socket for recharging equipment (batteries for VAEs, GPS, tablets, etc.).

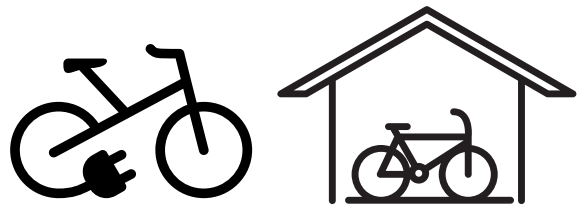
Vallespir Tourisme Céret Office

5 rue Saint Ferréol, 66400 Céret
+33 (0)4 68 87 00 53

Vallespir Tourisme Le Boulou Office

4 Rue Arago,
66160 Le Boulou
+33 (0)4 68 87 50 95

BICYCLE PARKING SPACES



2 bicycle parking spaces are available in Vallespir. Each can accommodate up to 20 bikes and includes a recharging station, an inflation station and a repair station.

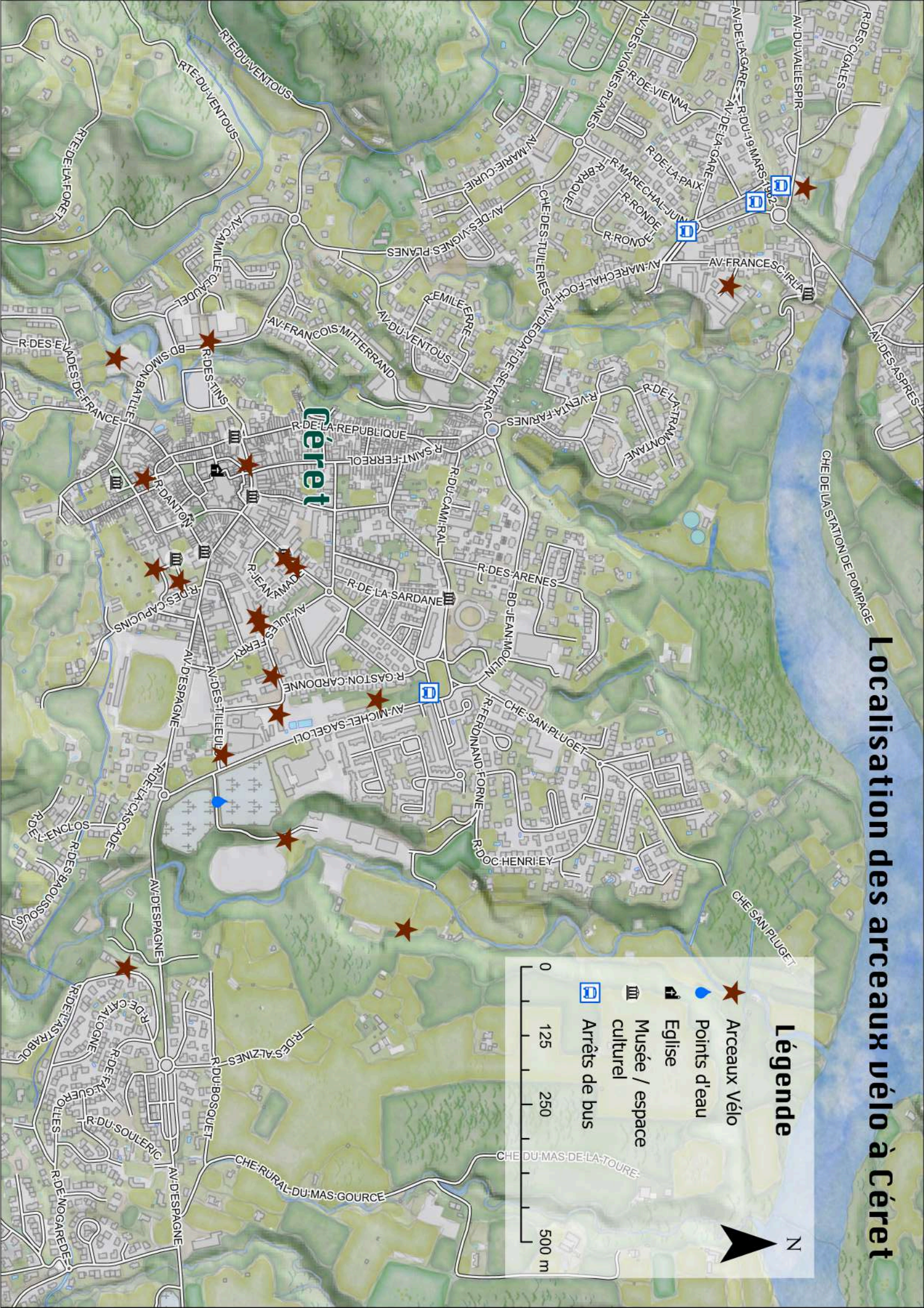
At Camping Maureillas

rue des Evadés de France,
66480 Maureillas-Las-Illas
+33 (0)4 48 07 06 36

At Châlet de l'Albère

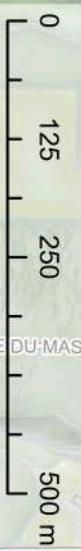
rue du Col de l'Ouillat,
66480, L'Albère
+33 (0)4 68 83 62 20

Localisation des arceaux vélo à Céret



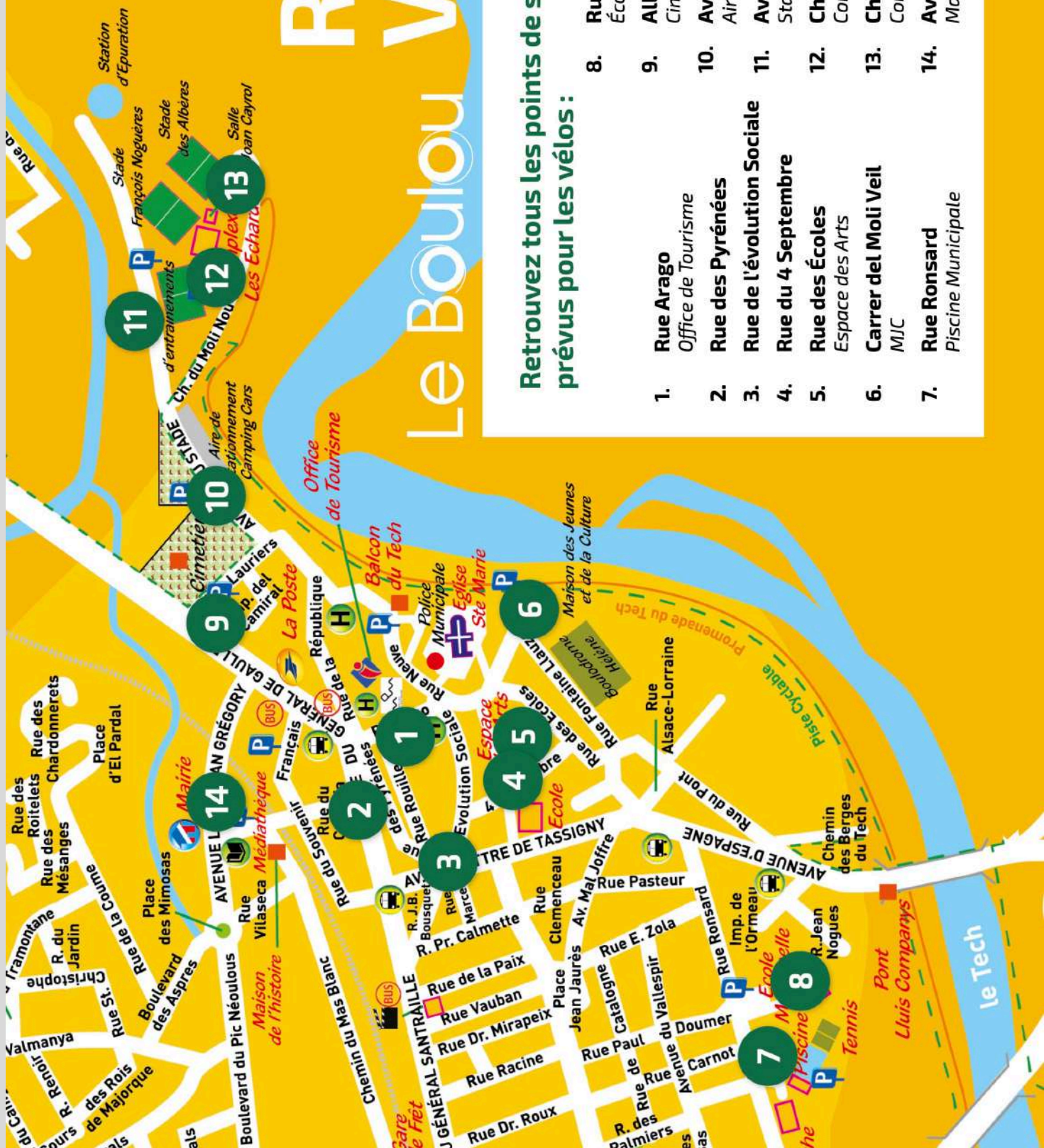
Légende

- ★ Arceaux Vélo
- 💧 Points d'eau
- ⛪ Eglise
- 🏛️ Musée / espace culturel
- 🚏 Arrêts de bus



RAÇKS VÉLOS

Le Boulou



Retrouvez tous les points de stationnement prévus pour les vélos :

- | | | | |
|----|--|-----|---|
| 1. | Rue Arago
Office de Tourisme | 8. | Rue Ronsard
École Maternelle |
| 2. | Rue des Pyrénées | 9. | Allée des Lauriers
Cimetière |
| 3. | Rue de l'évolution Sociale | 10. | Avenue du Stade
Aire de stationnement |
| 4. | Rue du 4 Septembre | 11. | Avenue du Stade
Stade d'entraînement |
| 5. | Rue des Écoles
Espace des Arts | 12. | Chemin du Moli Nou
Complexe des Échards 1 |
| 6. | Carrer del Moli Veil
MJC | 13. | Chemin du Moli Nou
Complexe des Échards |
| 7. | Rue Ronsard
Piscine Municipale | 14. | Avenue Léon Jean Grégory
Mairie |



- Services -

TRANSPORT

TRANSPORT BIKES & LUGGAGE

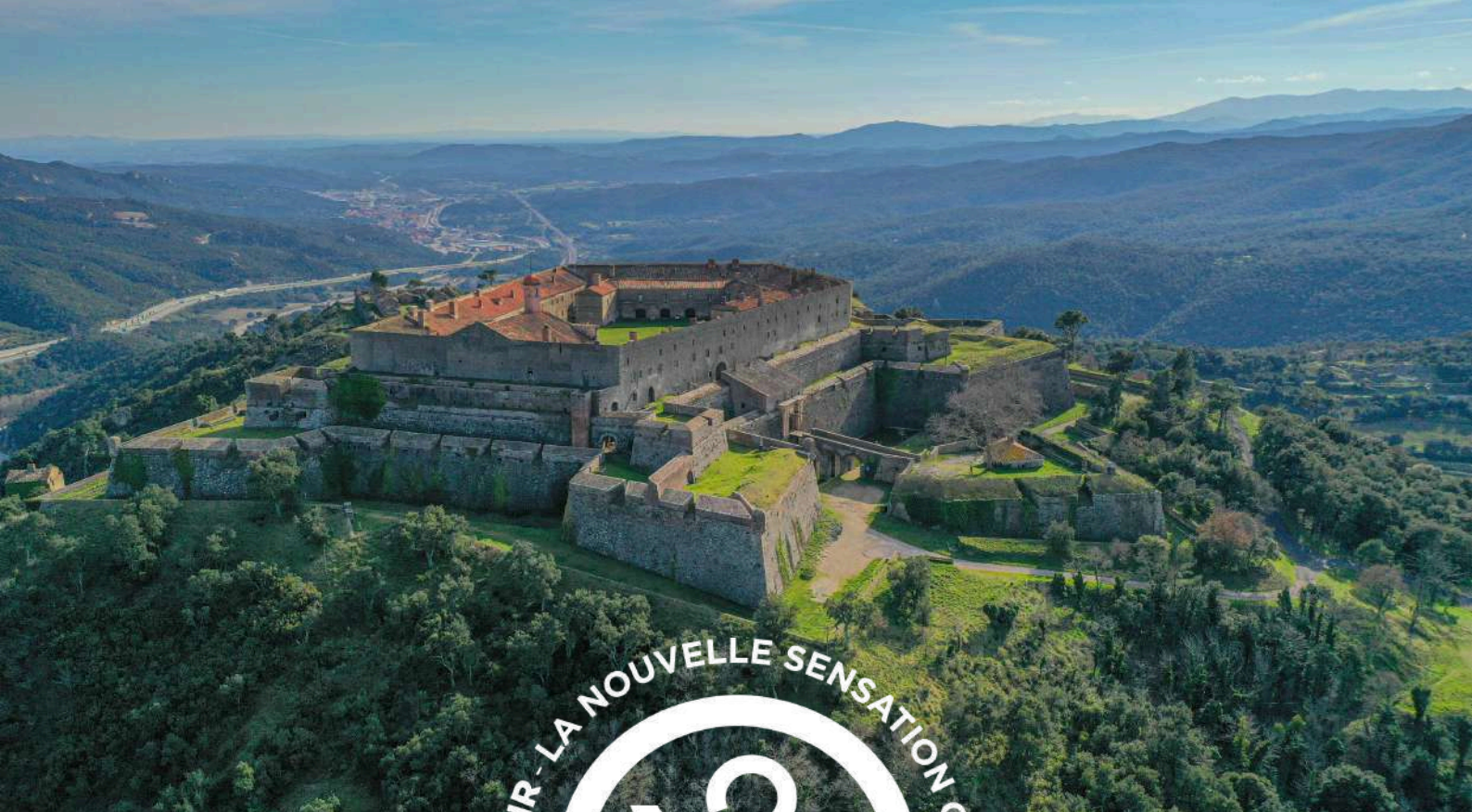


- **Taxi Céréтан (5 bicycles)**
11 chemin de St Ferréol
66400 Céret
+33(0)4 68 87 20 93
- **Allo Taxi 66 (3 bicycles)**
9 rue St Michel
66490 St Jean Pla de Corts
+33(0)6 74 40 99 04
- **Taxi Cabanes (2 bicycles)**
16 chemin Sainte Marguerite
66400 Céret
+33(0)6 27 31 98 82

COMING TO VALLESPİR



- **By bike** : from Argelès-sur-Mer via EuroVelo 8 (25km). From Prats-de-Mollo-La Preste (30km) or Figueras (30km) via the cross-border Pirinexus route.
- **By plane** : 40 min from Perpignan - Rivesaltes Airport.
- **By train** : from Perpignan station : www.scnf.com
- **By bus** : Monday to Saturday on routes n°530/531 Perpignan / Arles sur Tech.
- **By car** : from Perpignan (30km) on the A9 freeway, exit 43 (Le Boulou). From Girona (Spain) (80km) on the E15/AP7 freeway towards Figueras / Perpignan, then on the A9, exit n°43 (Le Boulou).



TOURIST INFORMATION OFFICES

Céret

5 Rue Saint-Ferréol, 66400 CERET
+33 (4) 68 87 00 53

Le Boulou

4 Rue Arago, 66160 LE BOULOU
+33 (4) 68 87 50 95

contact@vallespir-tourisme.com

www.vallespir-tourisme.fr